

Dakota County Technical College

Energy Consumption Analysis

Prepared by:

Edward H. Cook & Associates, P.A.

January 2009



**EDWARD H. COOK
& ASSOCIATES, P.A.**

Mechanical Engineering Consultants

809 Goodrich Avenue, St. Paul, MN 55105

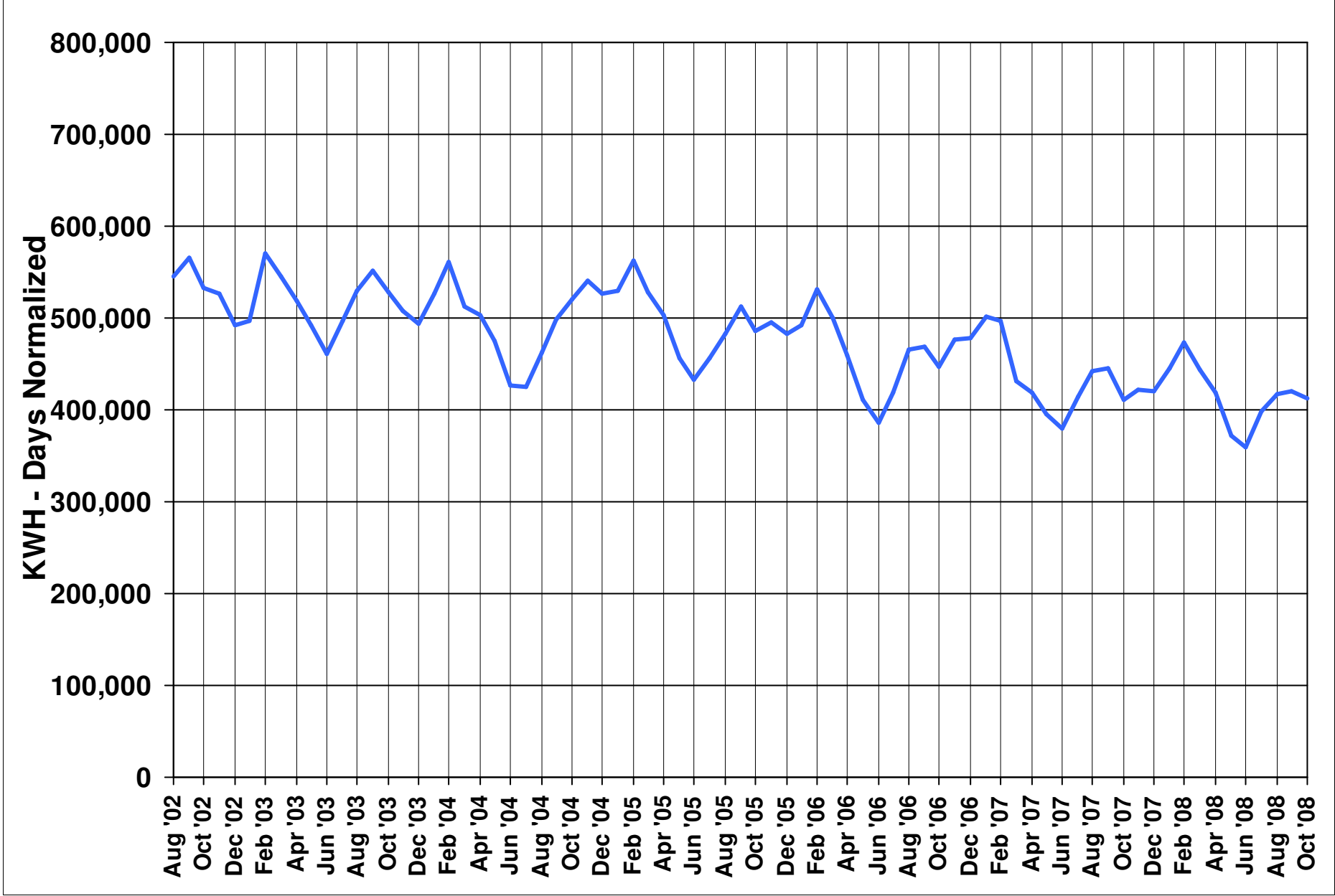
Tel: 651-298-0940 www.cookconsultants.com

Dakota County Technical College

Table of Contents

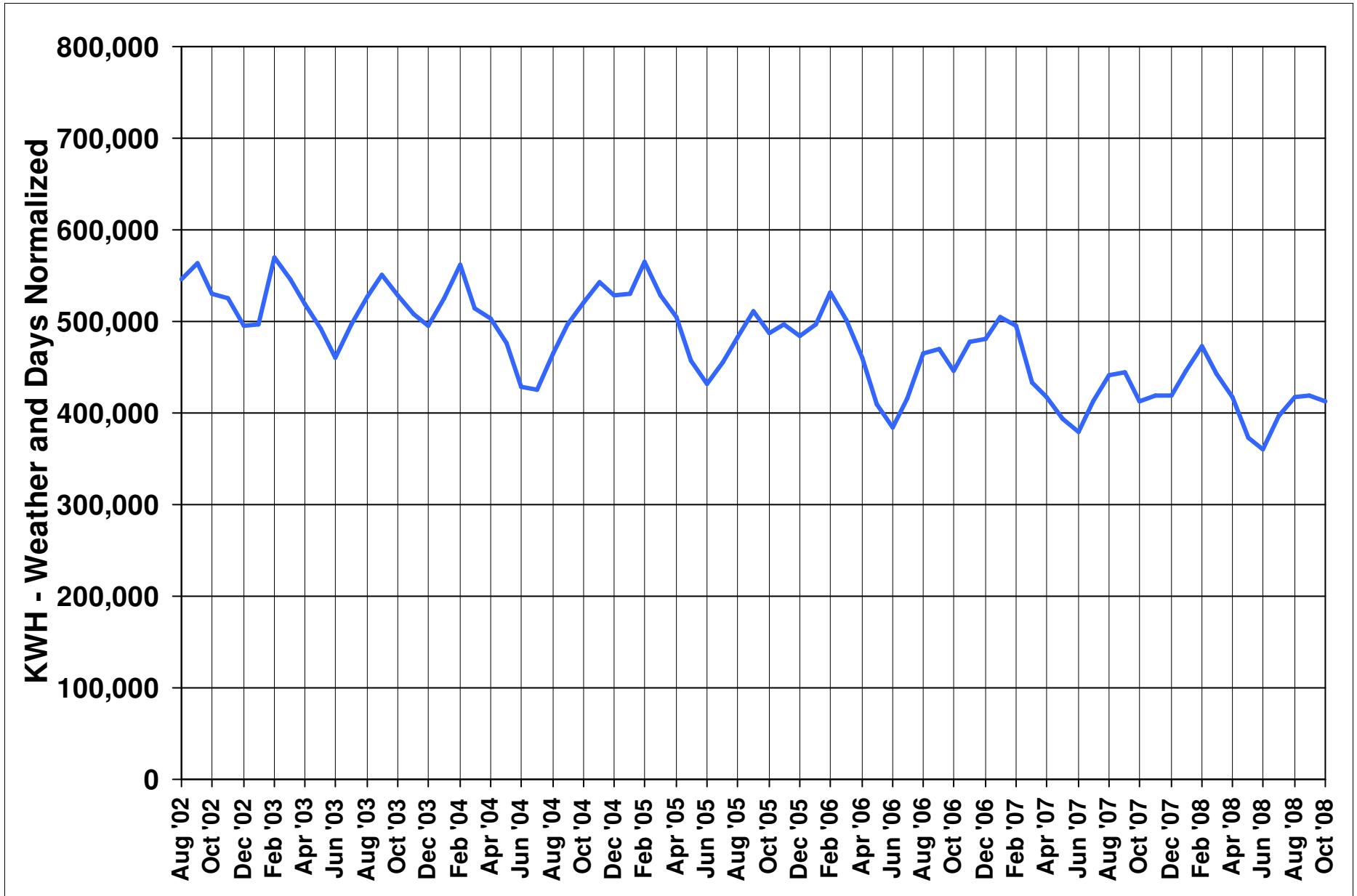
	Page
KWH Consumption and Demand	
Continuous Monthly Days Normalized Charts.....	3
Continuous Monthly Weather and Days Normalized Charts.....	4
Actual and Predicted Continuous Monthly Days Normalized Charts.....	5
Trend in Fiscal Year Consumption per GSF, Weather and Days Normalized Chart.....	6
Fiscal Year Peak Demand Chart.....	7
Fiscal Year Peak Demand per GSF Chart.....	8
Fiscal Year Electric Cost.....	9
Fiscal Year Electric Cost per GSF.....	10
Fiscal Year Data Sheet.....	11
Fuel BTU Consumption	
Continuous Monthly Days Normalized Charts.....	12
Continuous Monthly Weather and Days Normalized Charts.....	13
Actual and Predicted Continuous Monthly Days Normalized Charts.....	14
Trend in Fiscal Year Consumption per GSF, Weather and Days Normalized Chart.....	15
Fiscal Year Fuel Cost.....	16
Fiscal Year Fuel Cost per GSF.....	17
Fiscal Year Data Sheet.....	18
Fuel Oil Allocation.....	19
Weather	
Fiscal Year Degree Days Chart.....	20
Monthly HDD, CDD, and THI Data Sheets.....	21

Dakota County Technical College Continuous Monthly Electric Consumption

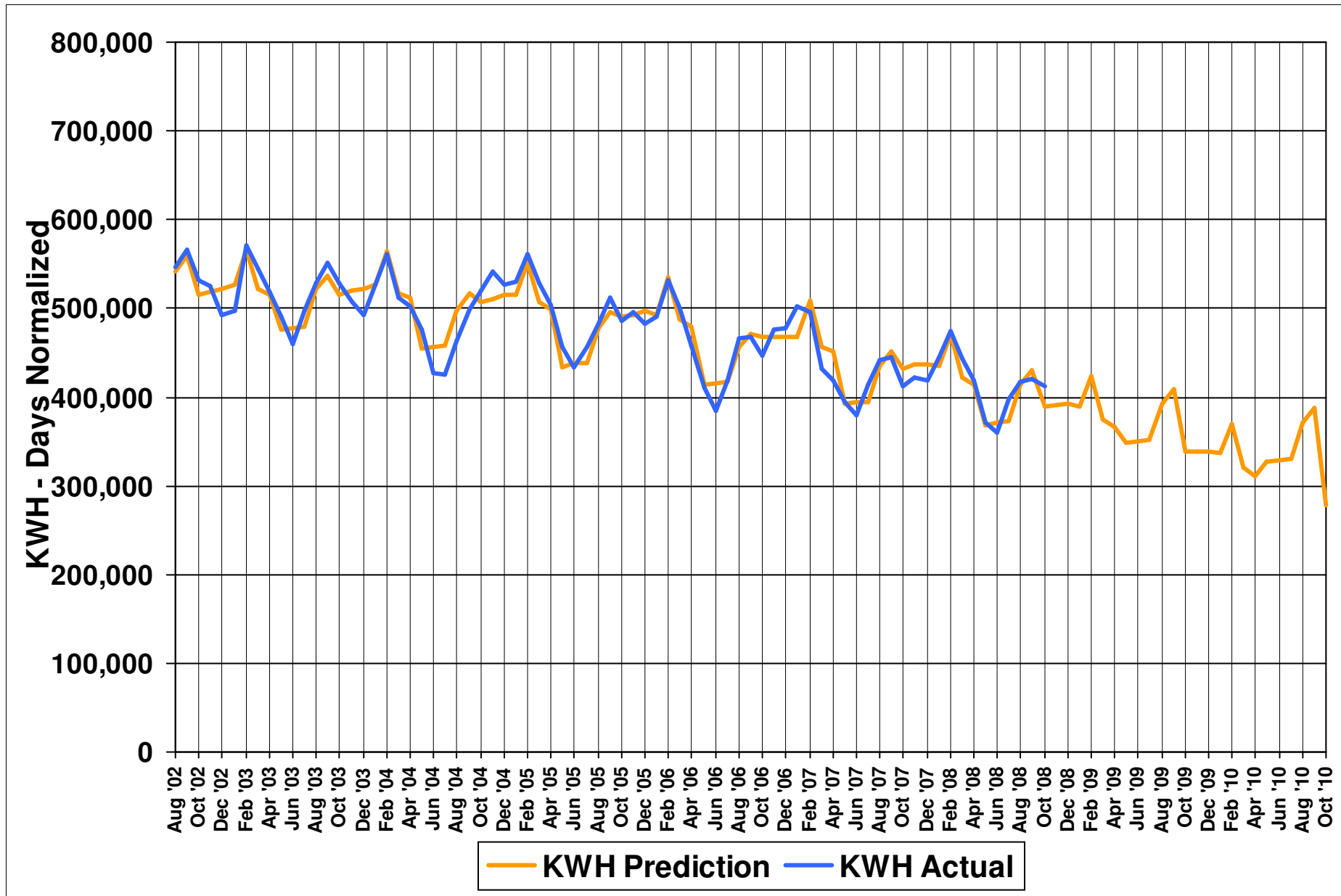


Dakota County Technical College

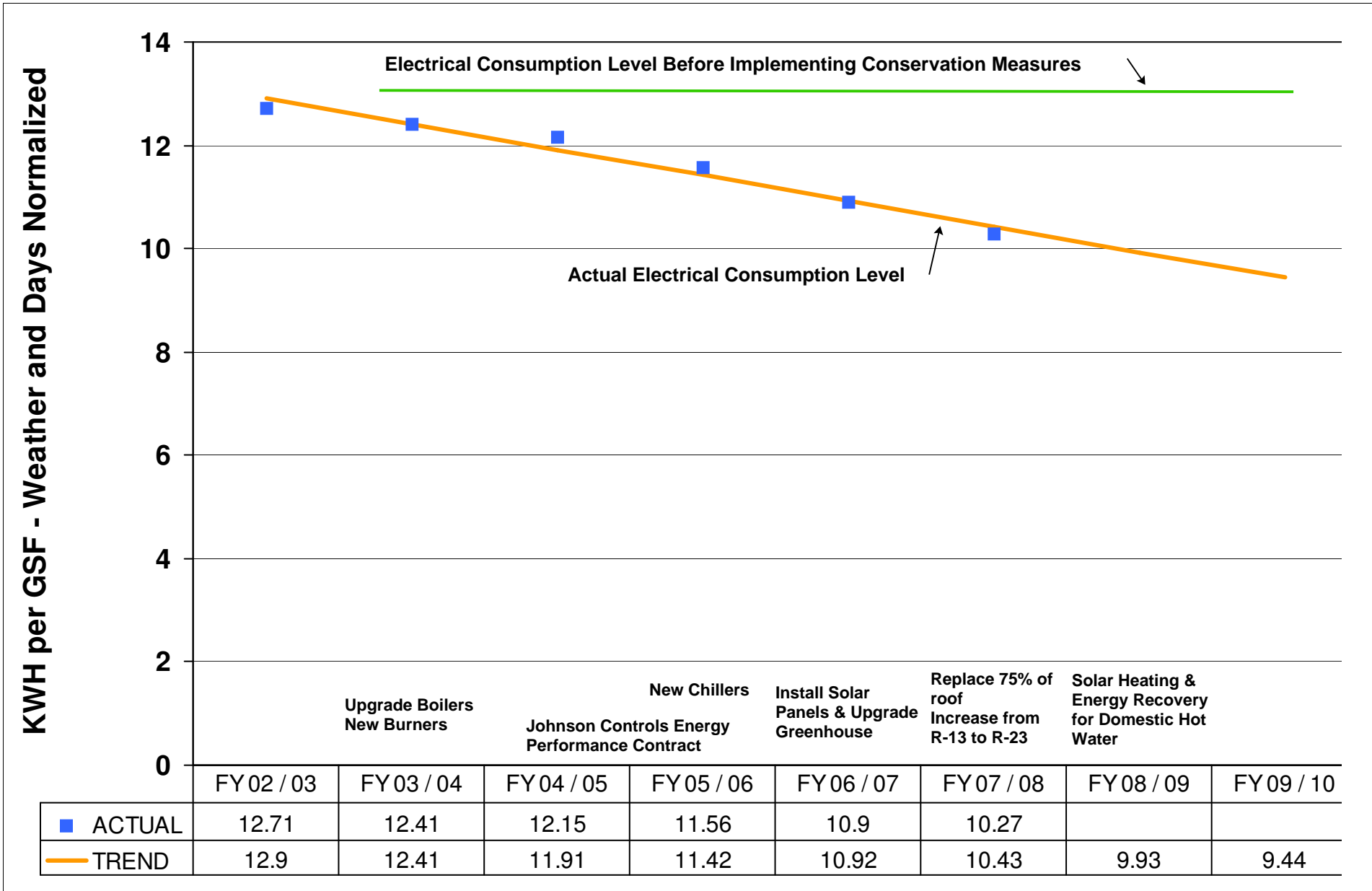
Continuous Monthly Weather Normalized Electric Consumption



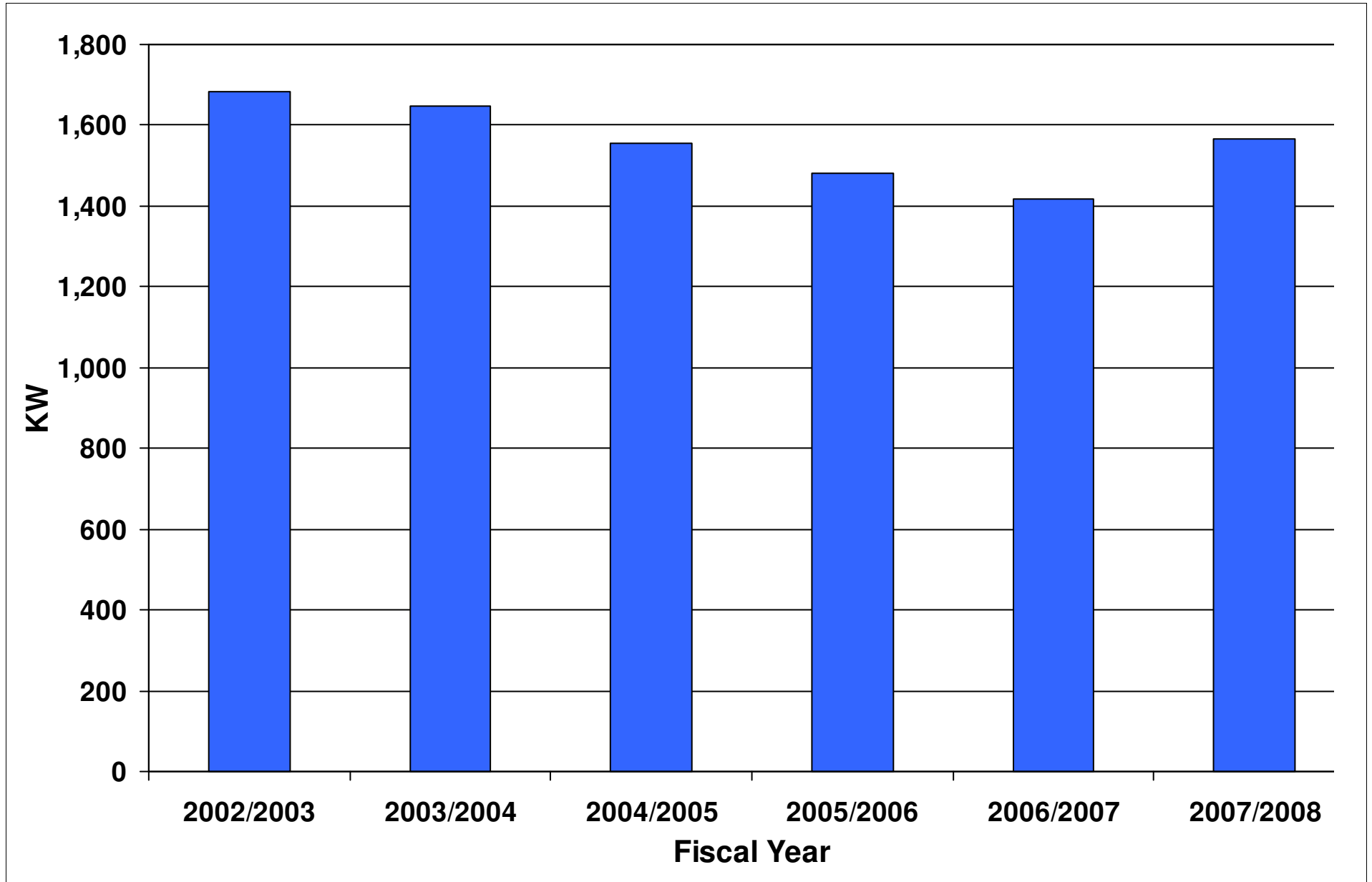
Dakota County Technical College Actual and Predicted Electric Consumption



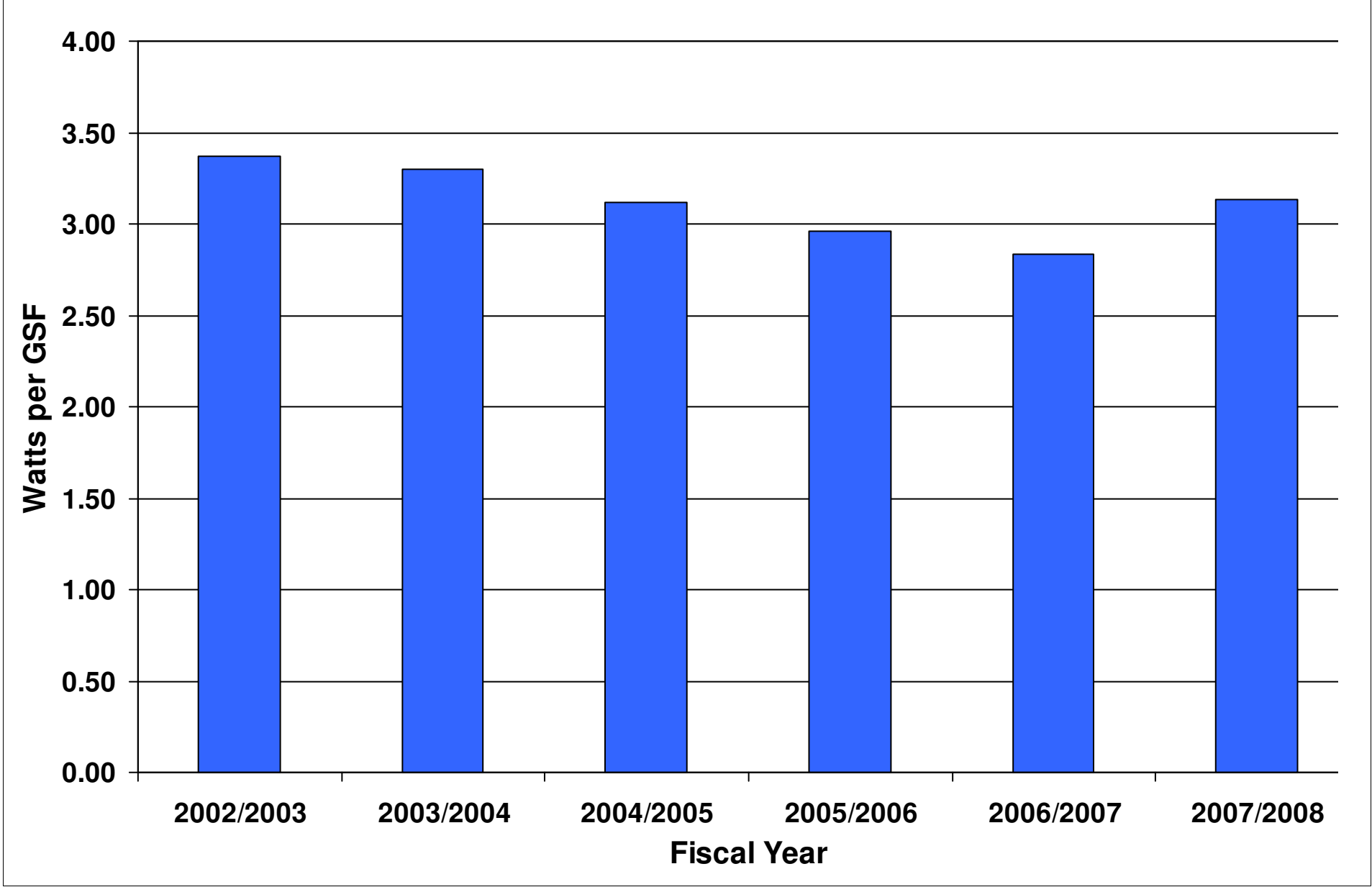
Dakota County Technical College FY Weather Normalized Electric Consumption per GSF



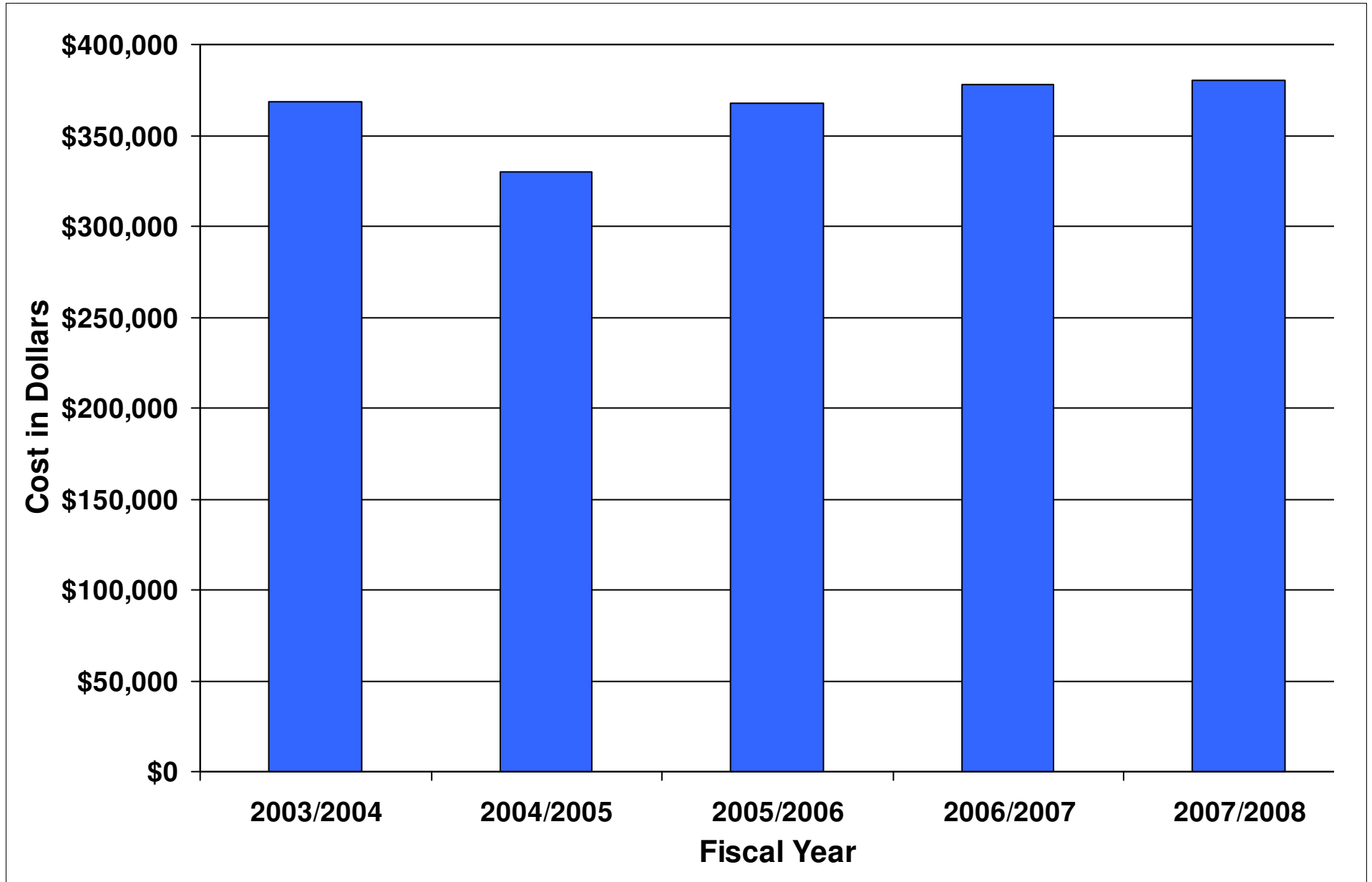
Dakota County Technical College Fiscal Year Electric Peak Demand



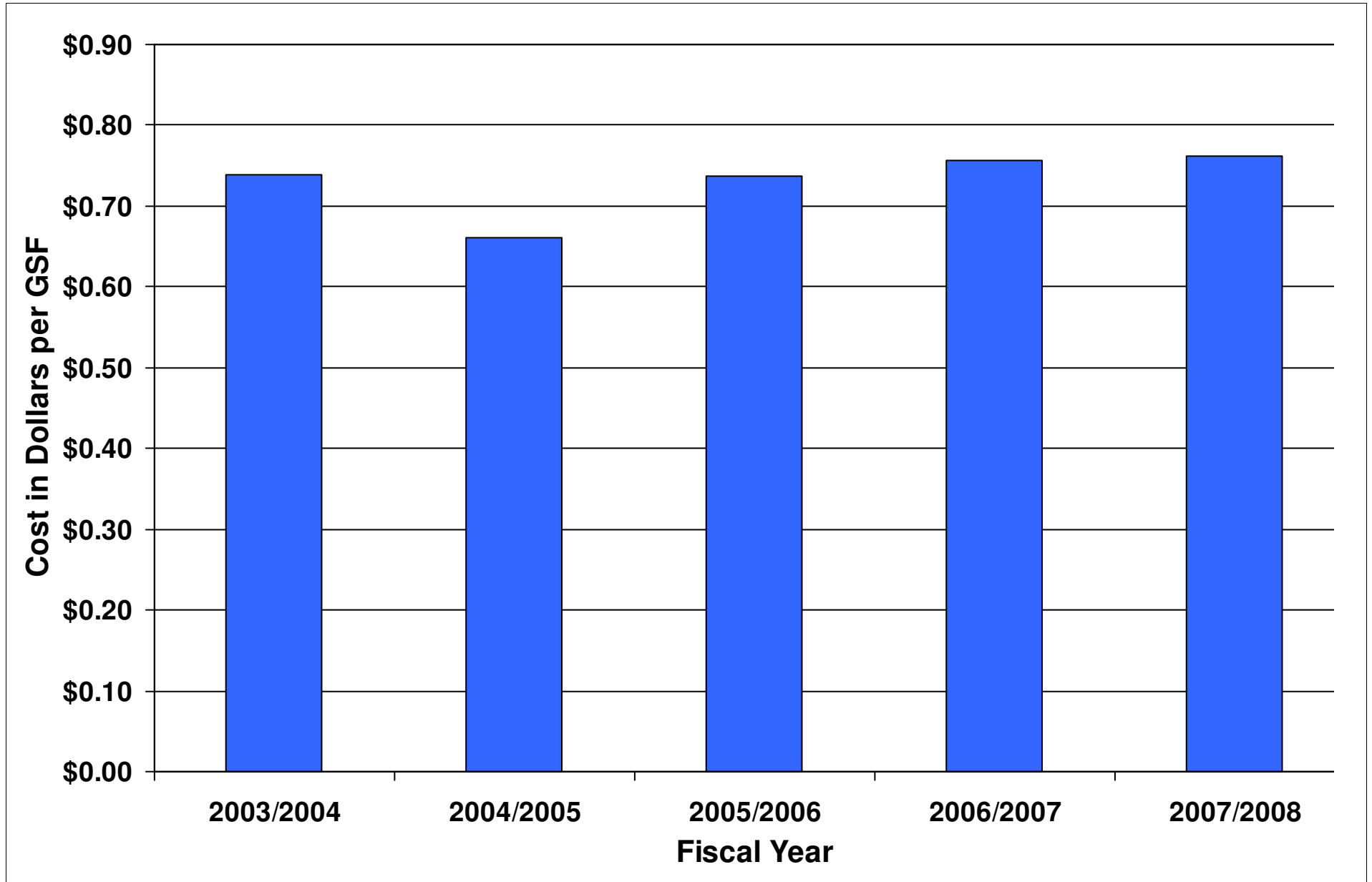
Dakota County Technical College Fiscal Year Electric Peak Demand per GSF



Dakota County Technical College Fiscal Year Electric Cost



Dakota County Technical College Fiscal Year Electric Cost per GSF

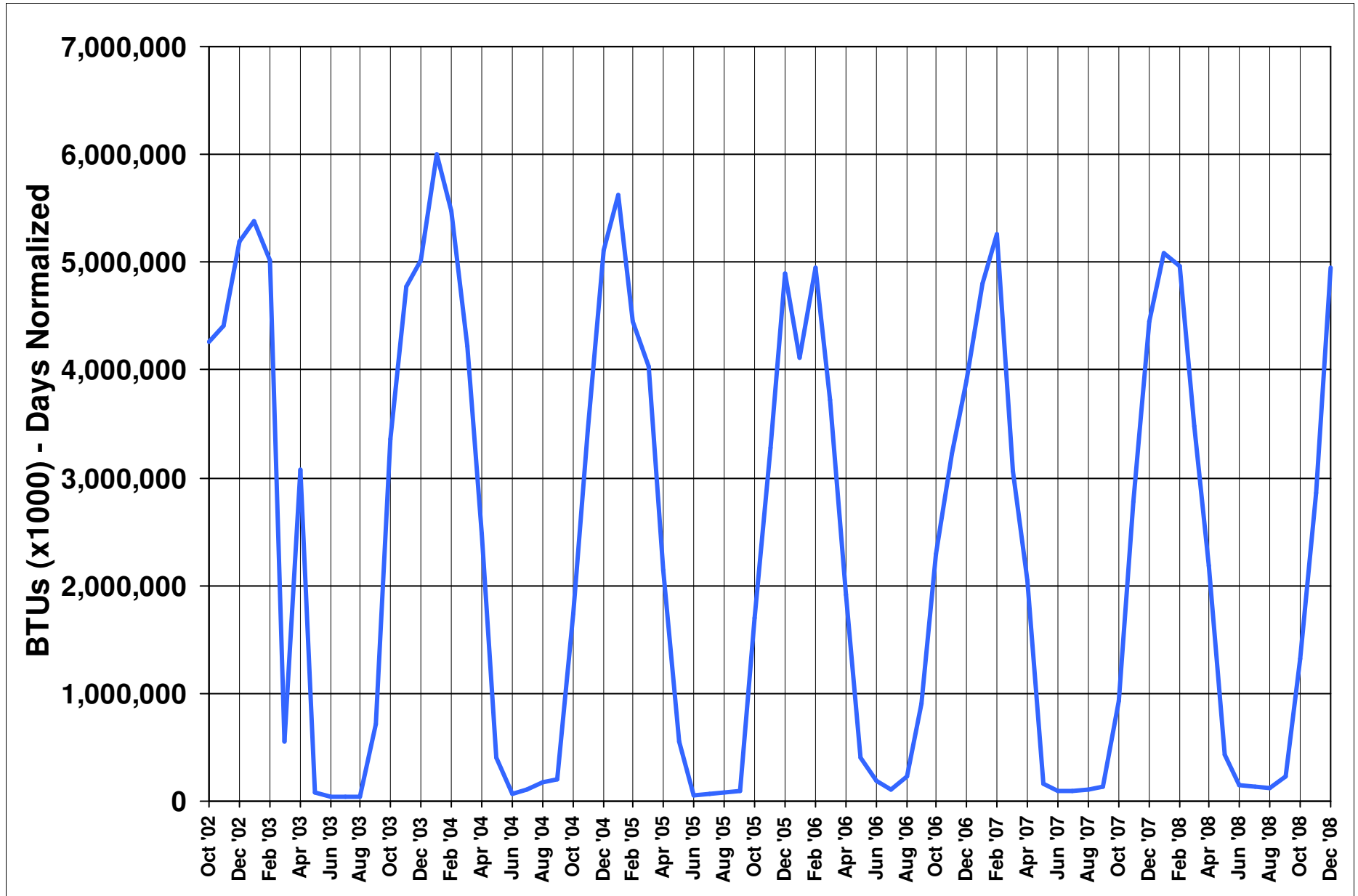


Dakota County Technical College

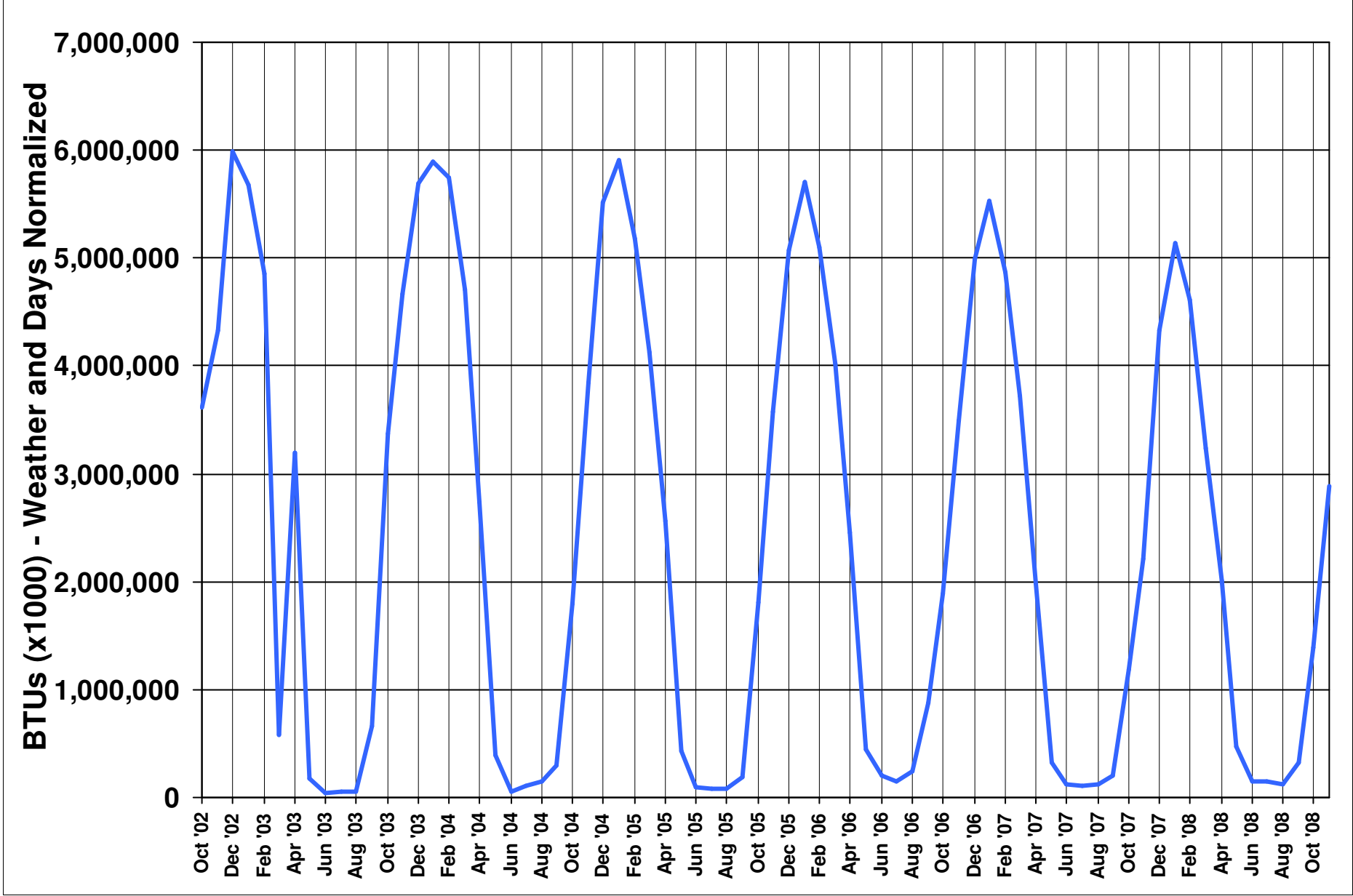
Fiscal Year Electric Consumption

Fiscal Year	KWH Consumption	Electric Cost	Cost Per KWH	Billing Days	KWH - Days Normalized (365)	KWH - Wthr and Days Normalized	Gross Sq Feet	KWH per GSF - Days Norm	KWH per GSF - Wthr/Days Norm
2007/2008	5,150,643	\$380,652	\$0.074	366	5,136,570	5,131,540	499,550	10.28	10.27
2006/2007	5,448,010	\$377,708	\$0.069	365	5,448,010	5,449,885	499,550	10.91	10.91
2005/2006	5,771,600	\$367,797	\$0.064	365	5,771,600	5,777,793	499,550	11.55	11.57
2004/2005	6,065,157	\$330,203	\$0.054	365	6,065,157	6,072,009	499,550	12.14	12.15
2003/2004	6,212,117	\$368,843	\$0.059	366	6,195,144	6,199,726	499,550	12.40	12.41
2002/2003	5,811,862	\$283,991	\$0.049	334	6,351,286	6,351,311	499,550	12.71	12.71

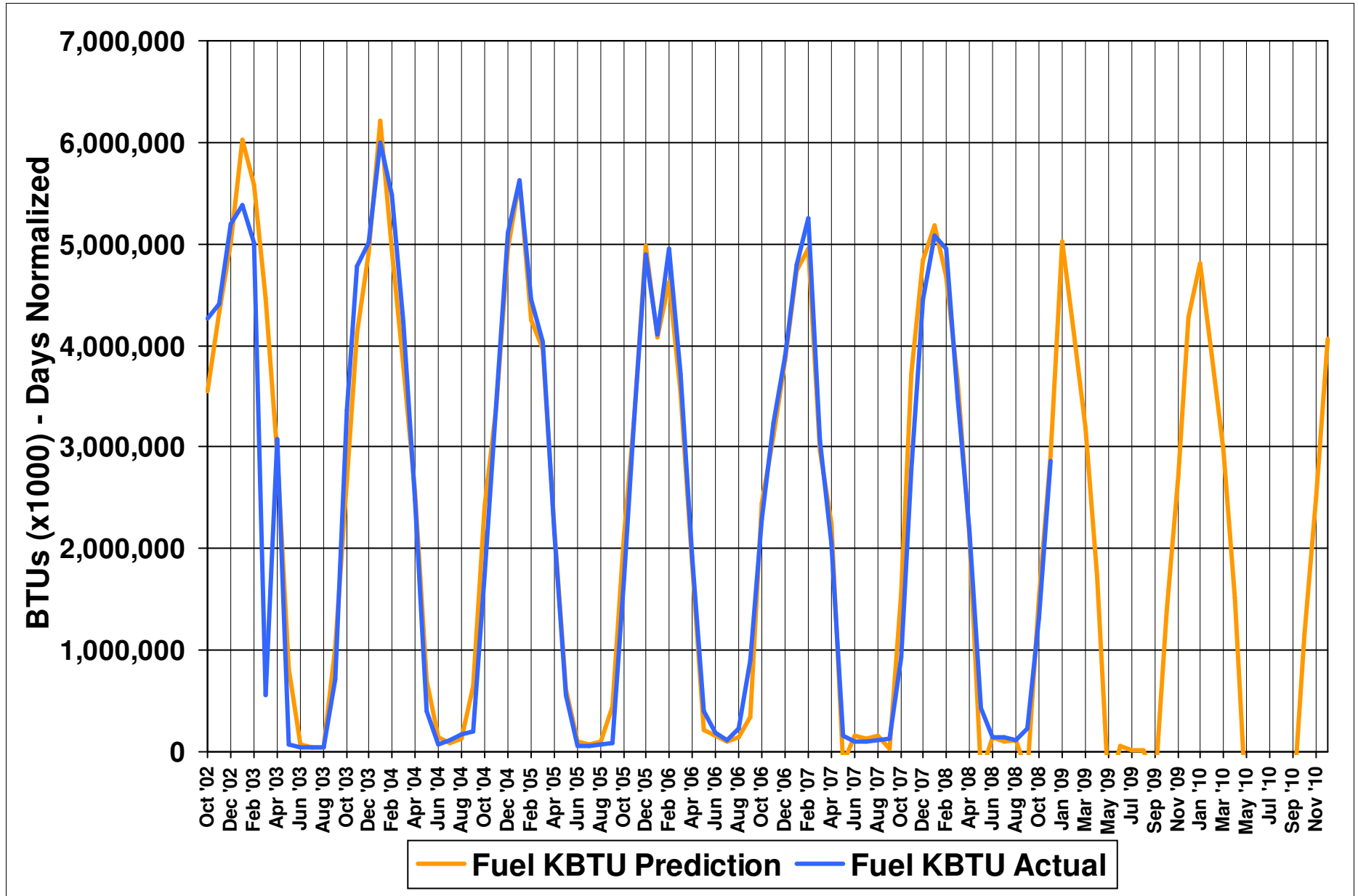
Dakota County Technical College Continuous Monthly Fuel BTU Consumption



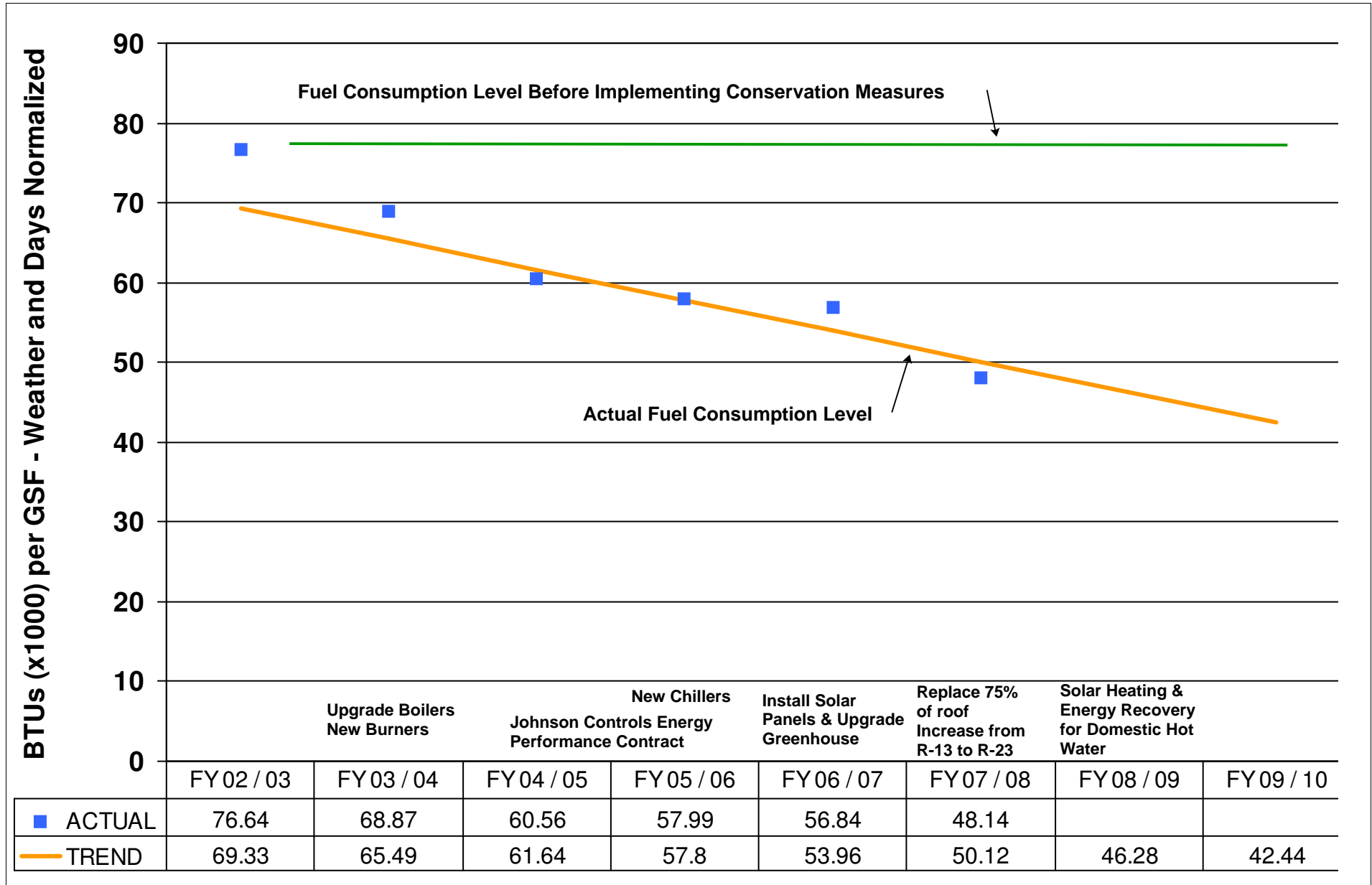
Dakota County Technical College Continuous Weather Normalized Fuel BTU Consumption



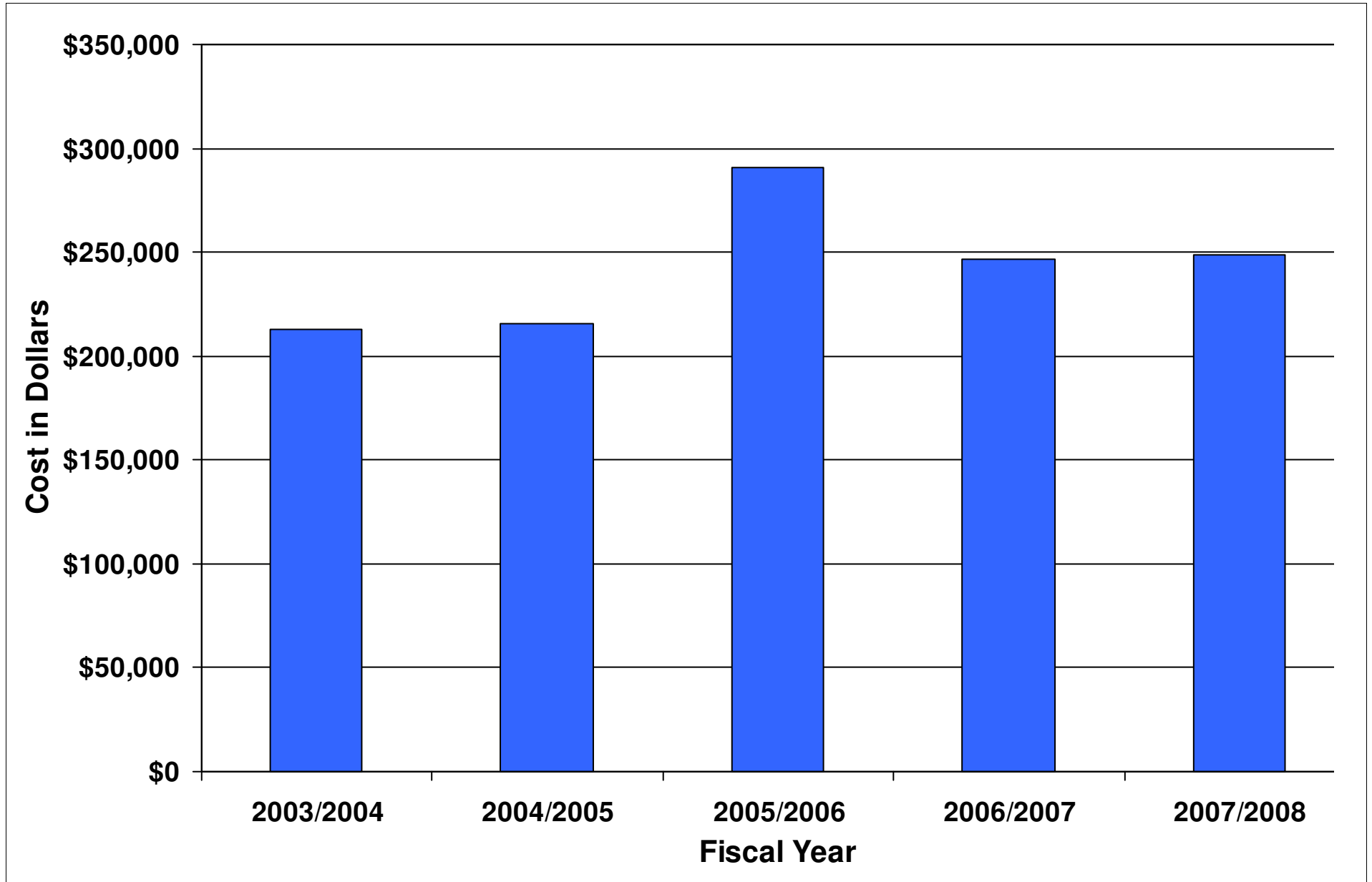
Dakota County Technical College Actual and Predicted Fuel BTU Consumption



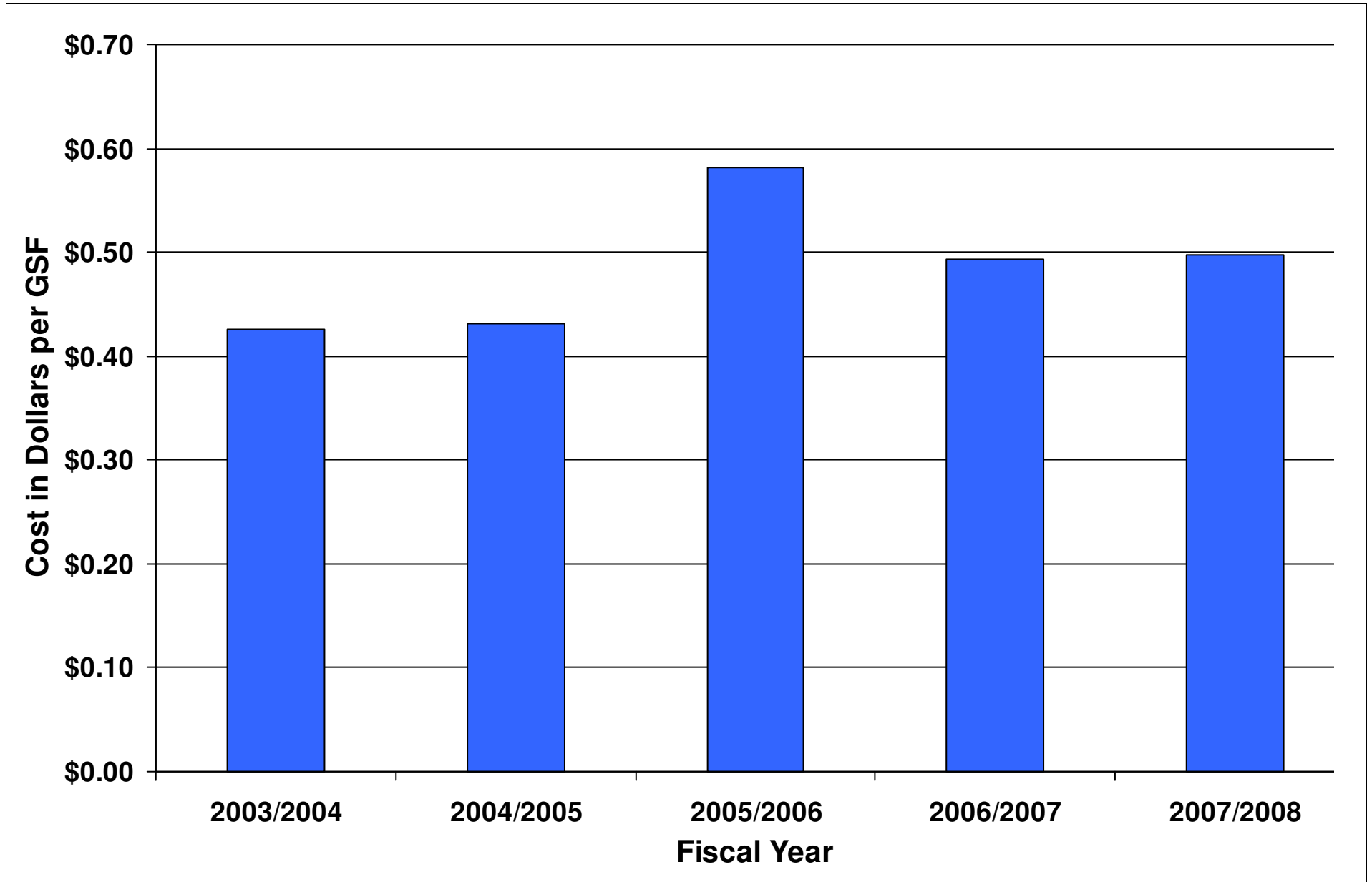
Dakota County Technical College FY Weather Normalized Fuel BTU Consumption per GSF



Dakota County Technical College Fiscal Year Fuel Cost



Dakota County Technical College Fiscal Year Fuel Cost per GSF



Dakota County Technical College

Fiscal Year Fuel BTU Consumption

Fiscal Year	Fuel KBTUs	Fuel Cost	Cost Per KBTU	Billing Days	Fuel KBTUs - Days Norm	Fuel KBTUs - Wthr/Days Norm	Gross Sq Feet	KBTUs per GSF - Days Norm	KBTUs per GSF - Wthr/Days Norm
2007/2008	25,081,945	\$248,511	\$0.0099	366	25,013,415	24,049,214	499,550	50.07	48.14
2006/2007	26,235,220	\$246,437	\$0.0094	365	26,235,220	28,396,887	499,550	52.52	56.84
2005/2006	25,576,184	\$290,723	\$0.0114	365	25,576,184	28,971,973	499,550	51.20	58.00
2004/2005	27,924,398	\$215,426	\$0.0077	365	27,924,398	30,254,362	499,550	55.90	60.56
2003/2004	33,058,000	\$212,558	\$0.0064	366	32,967,678	34,406,073	499,550	65.99	68.87
2002/2003	28,200,033	\$110,574	\$0.0039	273	37,703,341	38,290,432	499,550	75.47	76.65

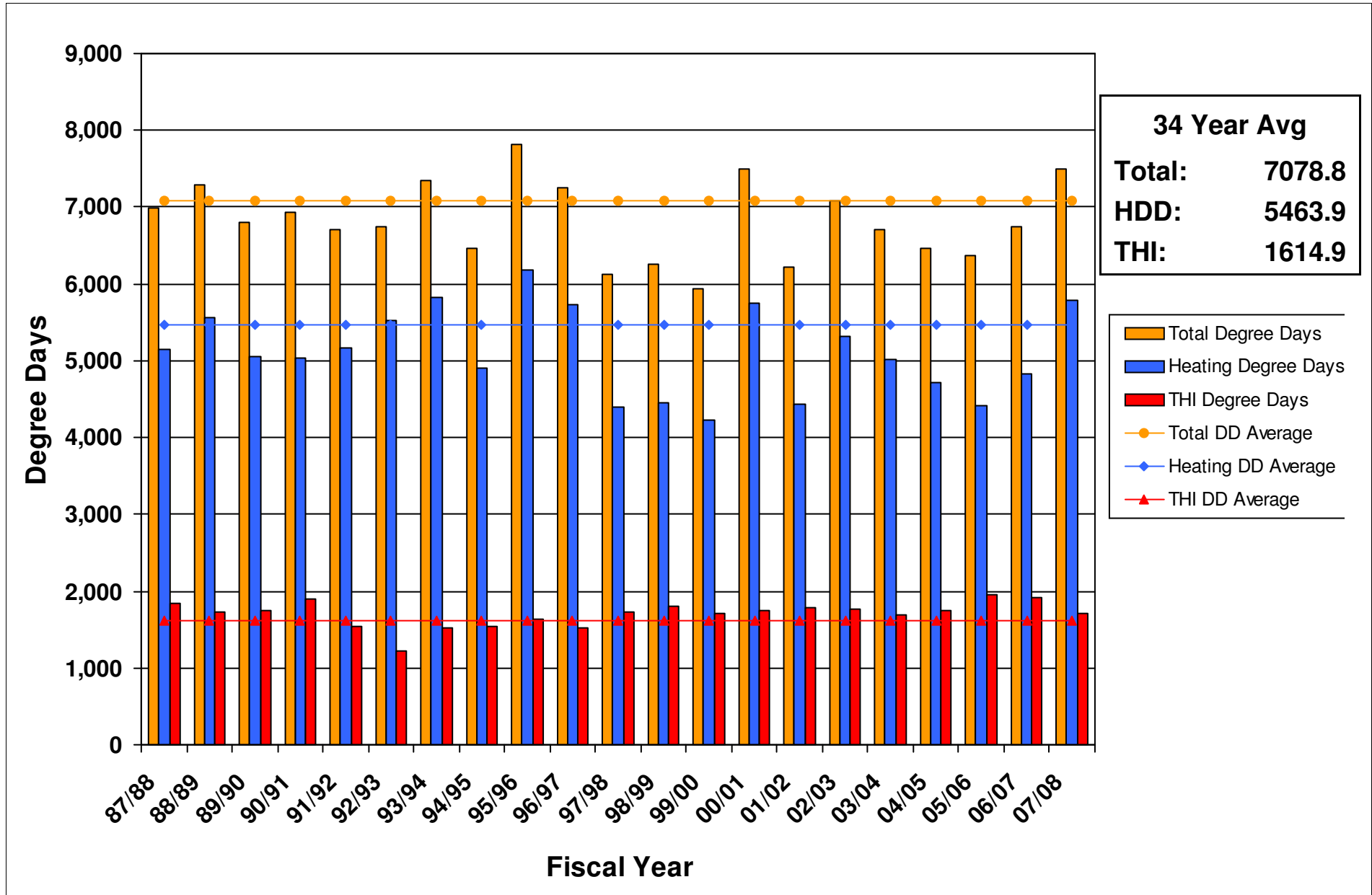
Note: 1 KBTU is equal to 1,000 BTUs.

Dakota County Technical College

Fiscal Year	Curtailment Month	Curtailment Days	#2 Fuel Oil Burned %	#2 Fuel Oil Gallons	\$ Per Gallon	Total Cost of #2 FO
2000/2001	Dec-00	8				
2001/2002	Mar-02	0.6	100%	3,104	0.70	\$2,163.30
2002/2003			100%	1,548	0.76	\$1,183.07
	Jan-03	5	5%	77	0.76	\$59.15
	Feb-03	5	5%	77	0.76	\$59.15
	Mar-03	2	90%	1,393	0.76	\$1,064.77
2003/2004			100%	6,000	0.98	\$5,894.25
	Dec-03	1	5%	300	0.98	\$294.71
	Jan-04	13	90%	5,400	0.98	\$5,304.83
	Feb-04	4	5%	300	0.98	\$294.71
2004/2005			100%	11,082	1.37	\$15,197.52
	Dec-04	3.67	5%	554	1.37	\$759.88
	Jan-05	5	5%	554	1.37	\$759.88
	Feb-05		45%	4,987	1.37	\$6,838.89
	Mar-05		45%	4,987	1.37	\$6,838.89
2005/2006			100%	13,655	1.72	\$23,419.49
	Feb-06	2	50%	6,828	1.72	\$11,709.74
	Mar-06		50%	6,828	1.72	\$11,709.74
2006/2007			100%	5,980	1.92	\$11,481.60
	Feb-07	6	5%	299	1.92	\$574.08
	Mar-07		95%	5,681	1.92	\$10,907.52
2007/2008			100%	8,755	2.44	\$21,362.20
	Mar-08					

Dakota County Technical College

Fiscal Year Degree Days, Base = 55 Degrees Fahrenheit



Dakota County Technical College

Heating Degree Days, Base = 55 degrees Fahrenheit

Calendar Year	JAN	FEB	MAR	APR	MAY	JUN	JUL	AUG	SEP	OCT	NOV	DEC	Total	Heating Season
34 Year Avg	1314.2	1034.4	742.5	287.8	57.3	2.1	0.1	0.2	33.9	209.1	640.3	1142.0	5463.9	5370.3
1988	1363.5	1186.0	646.5	223.5	9.5	0.0	0.0	0.0	9.0	326.5	657.0	1067.0	5488.5	5470.0
1989	1008.5	1240.5	879.5	294.0	70.5	2.0	0.0	0.0	31.0	198.5	769.0	1372.5	5866.0	5762.5
1990	869.5	858.0	578.5	309.5	66.5	5.5	0.0	0.0	26.5	225.0	518.0	1182.0	4639.0	4540.5
1991	1311.0	826.0	642.0	217.0	86.5	0.0	0.0	0.0	67.5	253.5	912.5	1036.0	5352.0	5198.0
1992	1033.5	790.0	659.5	359.0	42.0	9.0	0.0	0.0	13.0	274.0	731.0	1048.5	4959.5	4895.5
1993	1229.0	1053.0	796.5	328.0	44.5	6.0	0.0	0.0	77.0	271.5	733.0	1052.5	5591.0	5463.5
1994	1572.0	1161.5	630.0	289.5	37.5	0.0	0.0	0.0	16.0	135.5	516.0	946.5	5304.5	5251.0
1995	1186.5	1013.5	644.5	392.0	51.0	7.0	0.0	0.0	73.5	252.5	876.0	1159.0	5655.5	5524.0
1996	1396.0	1054.0	907.5	383.5	84.0	0.0	0.0	0.0	12.5	200.0	869.0	1239.5	6146.0	6049.5
1997	1356.0	924.5	746.5	308.0	83.5	0.0	0.0	0.0	3.0	221.0	760.5	831.5	5234.5	5148.0
1998	1088.5	623.0	712.8	148.9	2.3	5.7	0.0	0.0	5.0	132.4	519.7	920.6	4158.9	4145.9
1999	1279.8	745.5	628.6	189.8	23.9	5.2	0.0	0.0	18.8	194.7	406.0	900.6	4392.9	4345.0
2000	1200.3	771.6	438.3	274.1	24.6	2.3	0.0	0.0	35.3	138.0	722.2	1455.7	5062.4	5000.2
2001	1070.1	1189.7	839.2	257.1	34.3	1.9	0.0	0.0	24.2	226.4	285.7	840.3	4768.9	4708.5
2002	932.1	730.0	920.3	345.8	117.2	4.5	0.0	0.0	28.5	416.6	668.8	889.4	5053.2	4903.0
2003	1221.6	1085.8	735.1	251.5	27.6	0.0	0.0	0.0	52.8	207.2	674.2	925.9	5181.7	5101.3
2004	1348.8	950.7	589.6	206.5	60.5	0.0	0.0	0.1	1.3	194.6	509.4	1010.8	4872.3	4810.4
2005	1227.6	801.0	713.5	156.4	98.6	0.0	0.0	0.0	5.3	173.8	543.2	1088.7	4808.1	4704.2
2006	807.8	987.8	647.4	117.8	43.4	0.0	0.0	0.0	41.5	339.6	555.9	796.8	4338.0	4253.1
2007	1083.9	1159.6	534.5	310.0	6.1	0.0	0.0	0.0	10.9	127.0	818.4	1179.0	5229.4	5212.4
2008	1294.1	1142.3	818.4	344.6	43.0	0.0	0.0	0.0	4.3	185.4	632.9			

Dakota County Technical College

Cooling Degree Days, Base = 55 degrees Fahrenheit

Calendar Year	JAN	FEB	MAR	APR	MAY	JUN	JUL	AUG	SEP	OCT	NOV	DEC	Total	Cooling Season
34 Year Avg	0.0	0.0	2.6	39.0	189.4	400.0	559.6	478.7	219.4	58.1	1.3	0.0	1948.1	1847.1
1988	0.0	0.0	0.0	26.5	358.0	592.0	712.0	619.0	267.5	29.0	0.0	0.0	2604.0	2548.5
1989	0.0	0.0	6.5	24.0	194.0	386.0	635.0	504.0	238.0	107.0	0.0	0.0	2094.5	1957.0
1990	0.0	0.0	1.0	103.0	113.0	438.0	499.5	494.5	316.0	34.5	11.0	0.0	2010.5	1861.0
1991	0.0	0.0	0.0	81.5	311.0	543.5	541.0	509.5	220.5	46.5	0.0	0.0	2253.5	2125.5
1992	0.0	0.0	0.0	22.0	262.0	322.5	336.5	347.5	192.0	75.0	0.0	0.0	1557.5	1460.5
1993	0.0	0.0	0.0	10.0	126.5	278.5	460.5	483.0	92.0	27.5	0.0	0.0	1478.0	1440.5
1994	0.0	0.0	0.0	40.5	252.0	437.0	463.0	400.0	280.0	48.5	0.0	0.0	1921.0	1832.0
1995	0.0	0.0	0.0	0.0	99.5	482.5	538.5	585.5	226.5	45.5	0.0	0.0	1978.0	1932.5
1996	0.0	0.0	0.0	10.5	129.0	425.5	480.5	529.0	253.0	70.0	0.0	0.0	1897.5	1817.0
1997	0.0	0.0	0.0	6.0	90.5	471.0	518.0	444.5	285.5	141.0	0.0	0.0	1956.5	1809.5
1998	0.0	0.0	2.1	35.5	308.3	326.7	569.0	519.4	365.5	29.1	2.1	0.0	2157.7	2088.9
1999	0.0	0.0	4.7	20.5	205.8	380.9	674.6	481.5	207.4	25.5	11.5	0.0	2012.4	1950.2
2000	0.0	0.0	11.8	34.4	219.5	349.3	545.3	530.3	236.3	85.5	7.7	0.0	2020.1	1880.7
2001	0.0	0.0	0.0	62.5	185.0	426.6	653.5	592.2	195.8	20.8	14.8	0.0	2151.2	2053.1
2002	0.0	0.0	0.0	61.8	116.3	492.5	681.9	494.5	330.9	17.3	0.0	0.0	2195.2	2116.1
2003	0.0	0.0	0.0	52.0	132.7	398.8	585.2	620.8	271.7	81.2	0.0	0.0	2142.4	2009.2
2004	0.0	0.0	0.0	48.7	118.9	328.7	533.3	355.6	368.1	38.1	0.0	0.0	1791.4	1704.6
2005	0.0	0.0	3.3	73.5	135.5	551.9	683.0	518.3	347.5	89.0	0.0	0.0	2402.0	2236.2
2006	0.0	0.0	0.0	84.6	263.5	491.6	768.8	536.9	171.4	54.3	6.1	0.0	2377.2	2232.2
2007	0.0	0.0	18.3	75.8	288.3	538.0	656.9	527.6	308.3	103.4	0.0	0.0	2516.6	2319.1
2008	0.0	0.0	0.0	18.1	94.8	411.1	635.8	536.3	247.3	34.5	23.4			

Dakota County Technical College

Temperature Humidity Index Degree Days, Base = 55 degrees Fahrenheit

Calendar Year	JAN	FEB	MAR	APR	MAY	JUN	JUL	AUG	SEP	OCT	NOV	DEC	Total	Cooling Season
34 Year Avg	0.0	0.0	1.8	25.7	149.5	337.5	457.4	405.5	191.6	43.9	2.0	0.0	1614.9	1541.5
1988	0.0	0.0	0.0	17.5	246.1	438.7	537.2	470.5	206.2	15.7	0.0	0.0	1931.9	1898.7
1989	0.0	0.0	7.6	21.9	148.3	323.1	526.2	412.8	193.8	57.5	0.0	0.0	1691.2	1604.2
1990	0.0	0.0	4.3	77.8	97.2	375.4	429.1	419.6	260.3	22.8	8.2	0.0	1694.7	1581.6
1991	0.0	0.0	3.6	49.2	263.0	445.7	442.3	424.9	187.8	26.0	0.0	0.0	1842.5	1763.7
1992	0.0	0.0	0.0	21.6	172.9	270.0	311.9	302.7	172.8	49.2	0.0	0.0	1301.1	1230.3
1993	0.0	0.0	0.0	8.2	115.4	269.6	416.7	423.7	90.4	24.7	0.0	0.0	1348.7	1315.8
1994	0.0	0.0	0.0	21.2	171.3	379.9	402.8	346.0	264.4	56.7	1.5	0.0	1643.8	1564.4
1995	0.0	0.0	2.4	0.0	82.1	394.1	454.5	503.0	195.4	37.8	0.0	0.0	1669.3	1629.1
1996	0.0	0.0	0.0	2.8	98.1	344.7	390.0	429.1	207.8	48.0	0.0	0.0	1520.5	1469.7
1997	0.0	0.0	0.0	8.6	58.7	377.0	432.0	372.9	242.1	100.7	0.0	0.0	1592.0	1482.7
1998	0.0	0.0	6.8	26.0	247.9	292.8	466.3	446.3	302.5	49.0	4.8	0.0	1842.4	1755.8
1999	0.0	0.0	4.0	13.9	184.3	325.9	545.9	413.6	186.7	26.5	10.1	0.0	1710.9	1656.4
2000	0.0	0.0	16.0	24.1	190.1	297.5	457.4	451.2	191.5	85.0	8.9	0.0	1721.7	1587.7
2001	0.0	0.0	0.0	44.3	157.1	356.1	510.2	478.0	193.5	30.6	22.8	0.0	1792.6	1694.9
2002	0.0	0.0	0.0	50.0	93.2	409.3	558.2	426.9	285.0	17.6	0.0	0.0	1840.2	1772.6
2003	0.0	0.0	0.9	32.3	110.4	326.2	473.8	489.4	218.2	66.3	0.0	0.0	1717.5	1618.0
2004	0.0	0.0	5.4	37.3	124.0	280.4	446.9	312.5	312.4	40.5	0.0	0.0	1559.4	1476.2
2005	0.0	0.0	2.8	61.1	127.1	440.6	527.8	421.7	296.6	84.4	0.6	0.0	1962.7	1813.8
2006	0.0	0.0	0.0	48.7	208.2	371.8	575.5	440.4	163.1	42.2	4.4	0.0	1854.3	1759.0
2007	0.0	0.0	17.8	49.5	220.7	405.6	502.0	431.5	261.3	101.1	0.0	0.0	1989.5	1821.1
2008	0.0	0.0	0.0	17.5	73.0	324.4	490.4	426.4	231.1	41.4	23.3			